



BAIT CONTAINER CLASSIC



OWNER'S MANUAL

WELCOME TO THE BAIT SAVIOUR SYSTEM

Please read this handbook to ensure you fully understand how to operate and maintain all parts of the Bait Saviour System.

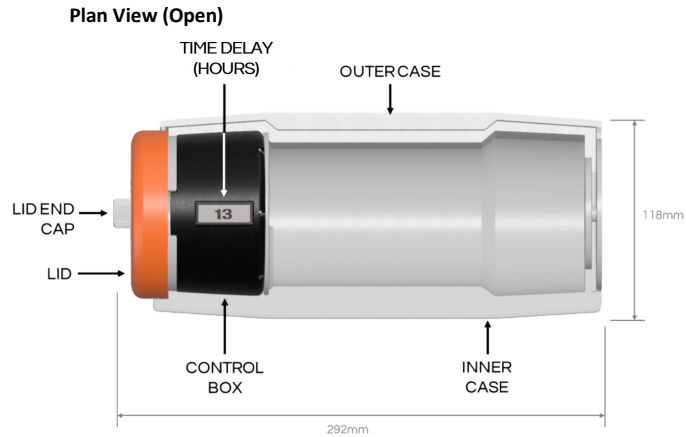
This owner's manual is available in digital format on our website: www.baitsaviour.com

Contents

Get to know your Bait Container	1
Mounting your Bait Container	2
How to use the Bait Container	3
Charging your Control Box	4
Maintaining your Bait Container	5
Troubleshooting	6
Warranty	7



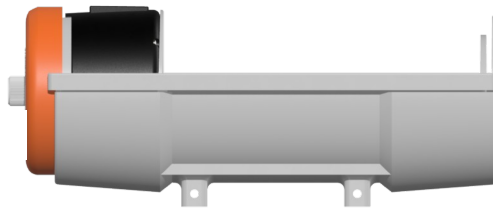
Get to know your Bait Container



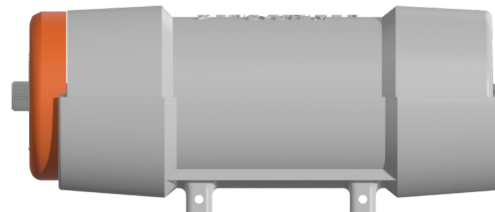
Plan View (Closed)



Side View (Open)



Side View (Closed)



How to mount your Bait Container

For instructions on how to correctly fix your Bait Container in place and use it with the Bait Container, please scan the QR code to the right, or go to our website www.baitsaviour.com/support. Here you will find a set of videos which provides instructions for each different style of pot.

It is important that the mounting instructions are followed carefully to ensure reliable operation of the Bait Container.



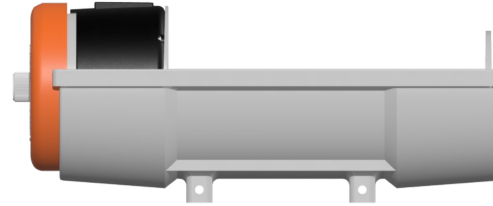
www.baitsaviour.com/support

How to use the Bait Container

Using the Bait Container is a simple 3 step process:

- 1) Load the Bait Container with bait (figure 3a). Remember - you can start to reduce your bait consumption by up to 75%.
- 2) Rotate the inner case to close the Bait Container (figure 3b). Once closed, the countdown timer starts.
- 3) The countdown timer is a preset time that is on the label on the top of your Control Box, for example if the label shows 18, the Bait Container will open 18 hours after being closed.
- 4) The Bait Container will then open after the desired time delay to bait your trap (figure 3c).

(figure 3a)



(figure 3b)



(figure 3c)

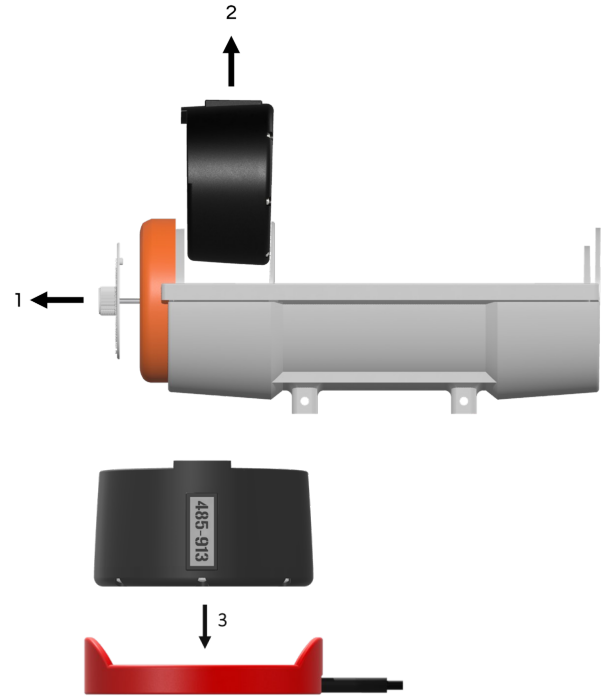


Charging your Control Box

Control Box

To remove the Control Box from your Bait Container, unscrew the lid upper part (1) and slide the Control Box out (2). Once out, simply place the control box flat side down in the center of your wireless charger (3). The light on your wireless charger will then turn blue to show the control box is charging.

The battery will fully charge within 8 hours.



Maintaining your Bait Container

Keep your Bait Container relatively clean

Whilst the product has been designed to withstand harsh environments, rinsing under the lid (figure 5a) and in-between the cases from time to time is advised to remove any debris that may build up.

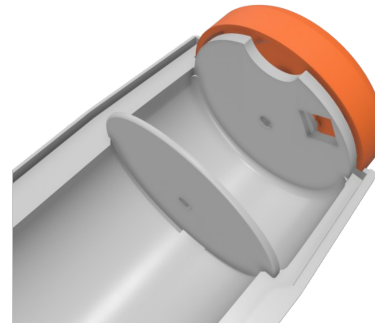
Storage

If you plan on storing the Bait Container out of the water for any prolonged period of time, ensure to thoroughly rinse all salt water off and store in a dry environment.

Depth

The Bait Container has been tested and certified to operate at depths up to 100 fathoms (183m). Using the product deeper than this can cause a complete failure of the Control Box, which is not covered under the product's warranty.

(figure 5a)



Troubleshooting - Bait Container

Bait Container does not close

Physical Obstruction - Check to see if there is any debris between the cases or under the lid which is causing the issue. If you see anything, simply remove or rinse the product in a bucket of clean water.

Battery Level - If the Control Box battery runs out completely, the Bait Container will not close.

Bait Container does not stay closed

Battery Level - If the Control Box battery level drops below 15%, the Bait Container has been designed to not stay closed. If the battery life is 15% or under, charging the Control Box will resolve the issue. We recommend to charge your Bait Container as soon as it drops below 20%.

Bait Container does not open

Obstruction in the pot - Ensure the Bait Container is mounted correctly within the pot and is not obstructed.

Control box does not charge

Charger failure - Check the wireless charger provided with the Bait Container works by positioning another wireless charge compatible device on top. If this other device does not charge, there is a fault with the charger and it needs replacing.

Warranty

Each item is sold with 12 months of warranty This includes:

- Any defects in materials used to manufacture your product
- Any defects in workmanship under normal use
- Any broken components under normal use

The warranty does not cover:

- Damage of a product resulting from negligence
 - Damage of a product resulting from unauthorised modification of the product
 - Damage caused by natural disaster
 - Theft or loss of the product
-



THE FUTURE OF LOBSTER FISHING IS HERE

DESIGNED & ASSEMBLED IN THE UK - MADE IN CHINA